



LA BELLA VITA



CORFU IMPERIAL

GRECOTEL LUXURY BEACH RESORTS



IT IS OUR LIVES. LA BELLA VITA, OUR FEELINGS FELLINI.

Grecotel Corfu Imperial is probably Greece's most impressively located hotel, perched above the olive groves at the end of panoramic Peninsula Kommeno. A world of seaside olive trees, marble & palms, beach coves, fine dining and a lovely promenade. It is a room with a view or a palazzo over the water. It doesn't get any better in Corfu.

CORFU IMPERIAL

GRECOTEL LUXURY BEACH RESORTS



IDEAL FOR

All ages, Couples & Families

NEWS 2024

New accommodation: Deluxe Family Suite Sea View & Deluxe Suite Sea View. **New** The Villa Medusa at Kommemo Peninsula
New Complimentary Full Set Bar Concept in all villas
New Open Air Cinema in Nissaki.

LOCATION

On the Kommemo peninsula with exclusive villas, situated between the towns of Dassia and Gouvia Corfu town: 12km • Airport: 14km

ACCOMMODATION

Total Rooms 299 • Rooms 136 • Bungalows 64 • Suites 35 • Waterfront Collection 47 • Boschetto Rooms 26

BEACH & POOLS

Private coves with 4 sandy beaches & 1 pebbly beach (Blue flag awarded)
• 1 fresh water grand pool (heated April, May & October) • 1 Fresh water pool • 1 Fresh water pool at Boschetto area • Private fresh water pools for villas & bungalows and sharing pools for bungalows • 1 Indoor Fresh water Spa pool (heated April, May & October)

FEATURES

• 12 Restaurants and a Theme Venue Danilia Village • 580m² Elixir Beauty Spa with indoor pool • 184m² brand new Gym with Technogym equipment • Grecoland kids Club • Luxury Boat Transfer

AWARDS

• Gold award in category Best Greek Hotel Restaurant 2023, by Greek Hospitality Awards 2023 • Green & Fair Hotel 2023 by TUI • Corfu Imperial won 24 Awards in 2023 by Travelmyth • TUI Umwelt champion 2020 • TUI Top Quality 2020 • Travelife Gold Award • Quality Management Guidelines for Customer Satisfaction & Complaint Management • Blue flag • Trip Advisor Certificate of Excellence 2023 • Booking.com Excellence Award 2023 • TUI Global Hotel Awards 2020 • Greek Hospitality Awards: Top Greek Resort 2021 • British Airways Holidays: Customer Excellence Award 2021

MEAL PLANS

BREAKFAST

A stunning variety of choices, ranging from the lavishness of American-style buffet to the elegance of exclusive à la carte options with local delicacies. Early & Late breakfast as well as In-room breakfast services are available upon request.

DINE CLUB HALF-BOARD PROGRAMME

An exciting half board dining concept with many options and extra advantages, including credit in selected restaurants in Grecotel Resorts around Corfu and free dining for kids. Enjoy free breakfast and lunch or dinner, plus credit allowance in amazing venues. For every 7 nights stay, indulge in two free à la carte dinners, including one in the picturesque Danilia Village. Drinks & Beverages not included.

See more at corfuimperial.com/dineclub

RESTAURANTS & BARS

BREAKFAST

Mon Repos, Med. Buffet Restaurant. American gourmet buffet with a choice of organic products and Greek Corner with traditional products and herb teas.

In Room Private Breakfast Early Continental Breakfast.

LUNCH

Mon Repos, Tasty Corner - Free Kids Dining. Baby food order - prepared on request.

Yali, Seafood Waterfront à la carte Restaurant. Finest gourmet dining al fresco, les fruits de mer and the catch of the day under the twinkling moonlight.

Trattoria & Wine Bar, Italian Restaurant. Italian cuisine with a mix of rich, warm finishes and a variety of culinary delicacies.

DINNER

Mon Repos, Med. Buffet Restaurant. Weekly Buffet Theme Evenings from the extensive buffets in "Mon Repos" Mediterranean Buffet Restaurant. Free of charge for guests in Dine Club Half Board.

Aristos, Fine dining à la carte Restaurant. Best Restaurant FNL Star Awarded 2018. Kids' Menus available.

Yali, Waterfront Fish Restaurant. Finest gourmet dining al fresco. Kids' Menus available

Trattoria & Wine Bar, Italian Restaurant A mix of rustic and refined italian dining. An elevated, but relaxed tasting experience. Kids' Menu available.

Merlin's Bar Restaurant, Asian & Latin American Fusion cuisine. Exclusive Panoramic View of the Kommemo Bay. Adults only (12+).

Danilia Village Culinary experience in Danilia Village, a beautiful replica of a 1930s Corfiot village. Complimentary transfer to Danilia village, per dinner reservation (According to the hotel's scheduled routes with sharing shuttle).

SNACKS

Gelateria, Signature fresh ice cream flavors & fruit "granitas" on the waterfront.

Vegan / Vegetarian / Gluten Free options, as well as Vegan and BIO wines available in all restaurants.

BARS

Alkinoos Lounge Bar, Cocktails, refreshing long drinks and hot beverages in the lively Corfu bar area or at the peaceful lounges all day.

Merlin's Bar Restaurant, Creative Cocktails

Wine Bar by Trattoria, A mix of wine, cheese, charcuterie and more both indoors and out.

Yali Beach Bar, Refreshing drinks or snacks all day at the Beach Bar or



DANILIA VILLAGE GUIDED TOUR

A beautiful replica of a 1930s Corfiot village. An entrance fee of 20€ per adult and 10€ per child applies exclusively for guests staying at Grecotel Resorts of Kommeno Peninsula. The fee includes roundtrip transfer, village's tour and treat at the "Kafeneion.

under the shade of your umbrella.

Pool Bar, Morning coffee, all-day snacks, relaxing lunches by the pool.

Odysseus Cocktail Terrace, Evening signature cocktails with live music and light snacks

ROOM SERVICE 24 hours at extra charge

Complimentary Transport, Complimentary luxury sea transfers between the Corfu Kommeno Resorts (available from 13/05 until 13/10/2024). Complimentary daily shuttle bus service to Corfu Town, reservation required at our Concierge or through Grecotel App.

KIDS

Kids Go Free Children up to 12 years old enjoy free kids dining in the "Tasty Corner", free Grecoland kids' programme, GrecoTeens and outdoor creative activities.

Grecobaby, 0-3 yrs. Pre-arrival order of baby equipment, baby food order. • Baby-sitting, extra charge

Grecoland Kids Club, 4-12 yrs. 6 times per week (10.00-18.00). Children under 4 yrs. must be supervised at all times by a parent or guardian.

Discovery Adventures, 7-14 yrs. High season - 2 times per week (Programme may vary due to weather & number of participants)

Grecoteens Activities, 13+ yrs. From mid June - mid September

Free Kids Dining, 3-12 yrs. • Grecoland Tasty corner - an ALL IN-Dining experience: • All Day favorite snacks at Grecoland (11:00 -17:00) • Tasty corner lunch at Main restaurant (12.30-14.00)

A La Carte kids' dining in designated restaurants with special kid's menu including juices & refreshments or credit allowance for regular menu orders

SPA & WELLNESS

580m² Elixir Beauty Spa / indoor pool

Spa Facilities Indoor Pool (heated April, May & October) • Open-air Relaxation Loggia (168 m²) • Sauna (Men & Women) • Hammam (One space - Mixed for Men & Women) • Fitness aerobic room • 4 Private Massage Rooms • 1 Couples Massage Room • 1 Beauty Salon Room • Changing Rooms • Hairdresser Salon

Gym Operation hours: access 24hr 184m² Fitness room with Technogym brand new equipment including: Treadmills, Bikes, Trainers - cross trainers, Rowing machine, Crossover machine, Leg cure/leg extension, Press and overhead press, Adductors, Shoulder press, Abdominal benches, Dorsals benches, Weights benches, Much fitness machine (back machine, brand: Pegasus strength), Technogym weights, Kettebells.

FITNESS & ACTIVITIES

GYMNASTICS

Gym, TRX, Aerobics & Aqua Aerobics, Yoga, Pilates, Jogging, Walking, Dancing

SPORTS

Table Tennis. Biodegradable mini golf. Tennis Club: 7 Quarzsand Tennis Courts with floodlights, rackets and balls, Tennis coaching, Basketball, Volleyball, Archery, Mini Soccer (at the nearby LUX ME Daphnila Bay Dassia).

Watersports: Extra charge: Yachting & Sea Activities, Watersports School, Canoes, Glass bottom canoes, SUPs & Pedaloos at Water-skiing, Wakeboard, U-slider, Airstream, Space buggy, Surf-bike, E-foil, Banana and Rings, Parasailing, Diving, Mountain Bike Centre, Bike rental.

E-Bike Service: Includes digital tour, GPS and other in-app services (extra costs apply). NOTE: Cost depends on rental duration. The service will be available daily from 7 am - 11 pm. The rental procedure as well as the acceptance of the Terms & Conditions and the payment will be

automated and completed by the guest.

Outside The Hotel: Extra charge: 18-hole Golf Course (14km), Horse Riding (approx. 30km)

Shopping • "SunStores" Market/Souvenir Shop • Charisma Jewellery Boutique • Boutique • Antiquerie • Cosmetic shop at Elixir Beauty Spa

EVENING ENTERTAINMENT

Various live music performances, **New** Open Air Cinema in Nissaki, weather permitted, Family oriented evening programs (seasonal)

MEETING FACILITIES

Grand Salon Lounge for up to 150 persons in Theatre Style with hi-speed WI-FI internet access. Danilia Village (5Km from the hotel), capacity in Theatre Style 200 persons.

ENVIRONMENTAL POLICY

• Travelife Sustainability Certification • Waste Recycling • Use of Solar Energy to heat water • Paper, Aluminium and Glass Recycling, Battery, small appliance & light-bulb recycling • Towels & Bed linen changed upon guests' request • Energy and water saving measures, ecological cleaning agents • Blue Flag awarded Beaches • Environmental Activities and Information for guests.

SERVICES

WiFi in all hotel areas and guest rooms.

Grecotel Mobile App proposes a world of information regarding your stay, online-reservation at the à la carte restaurants and services in and out of the hotel.

24h WhatsApp Concierge Designated staff members are at call on WhatsApp, to assist guests on everything they may desire.

Multilingual personnel English, German, Russian, French, Greek

Medical Services 24hr Medical cover, Doctor on call -extra charges may apply depending on guests' travel insurance • Pharmacy at 3 km • Hospital at 6 km • Medical Centre at 8km.

Concierge Services • Yachting & Sea Activities • Diving Center • Customized Land Activities

Transport Car Rental Desk in hotel (Local agency) • Motor Bike Rental from concierge • Bus stop at 2km • Complimentary twice (in the morning & in the afternoon) daily shuttle bus service to Corfu Town - prebooking required.

Transfer Services on request

Money All major Credit Cards are accepted • ATM in the hotel premises • Nearest Bank at 10 km

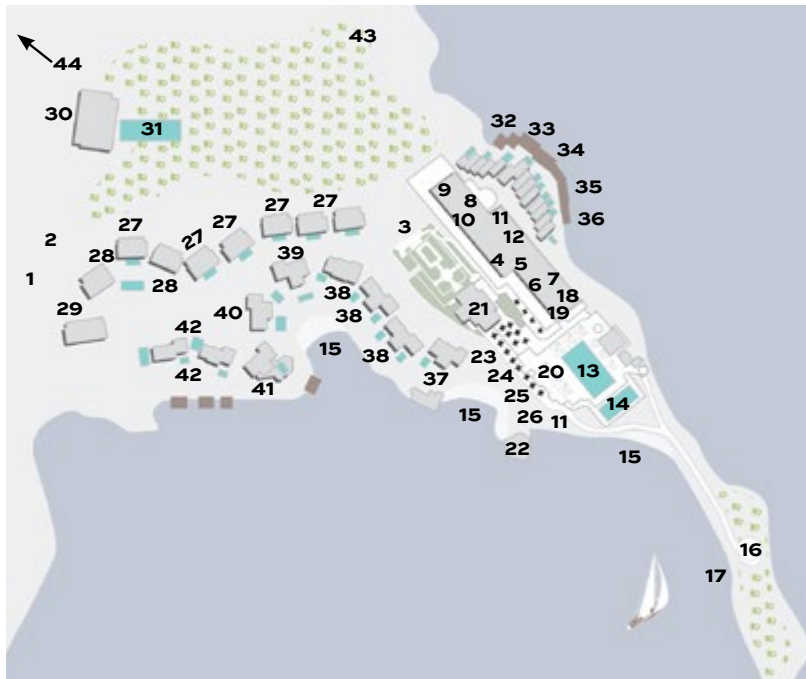
Voltage Current 220V

Mobility Impaired Guests Door width 68cm. Not all departments are accessible to guests in wheelchairs. Ramp section beside most of the steps in the hotel. Recommended: Guests in wheelchairs are to be accompanied as there are some parts of the hotel and surrounding area that may be difficult to access. No specially adapted rooms for the mobility impaired guests.

Animals Dogs that weigh up to 8kg are allowed in selected bungalows & villas with private gardens. Restrictions apply. Service animals are allowed to accompany their handler in all hotel premises. View pets policy at grecotel.com/pets-policy.

Official Hotel Categorization Five star Resort

Contact details GR-490 83 Tzavros, Kommeno, Corfu
TEL.: (+30) 26610 88400 E-mail: reservations.ci@grecotel.com



CORFU IMPERIAL HOTEL MAP

1. Hotel Main Gate
2. Parking area
3. Hotel Entrance
4. Reception/Lounges
5. Charisma Jewellery Boutique
6. Alkinoos Lobby Bar
7. Meeting Facilities
8. Elixir Beauty Spa & Wellness Area with Indoor Pool
9. Fitness Center
10. Hairdresser Salon
11. Sunstores Holiday Boutiques
12. Fifty-Fifty Boutique
13. Grand Swimming Pool
14. Swimming Pool
15. Beach
16. Private Island
17. Watersports & Yacht Deck
18. Mon Repos All Day Dining
19. Merlin's Bar Restaurant
20. Odysseus Cocktail Terrace
21. Aristos Fine Dining Restaurant
22. Yali Seafood Waterfront Restaurant
23. Trattoria & Wine Bar Restaurant
24. Gelateria
25. Antiquerie
26. Grecoland
27. Deluxe & Swim Up Bungalows
28. Family Bungalows Open Plan Sharing Pool
29. Panoramic Bungalows & Junior Suites Waterfront
30. "Il Boschetto" Family Accommodation
31. "Il Boschetto" Swimming Pool
32. Palazzo Di Lago Private Pool
33. Maisonnets on the Rocs
34. Palazzo Odysssia Private Pool
35. 2 Bedroom Roc Villas Private Pool
36. Palazzo Sissy Private Pool
37. 2 & 3 Bedroom Villas Waterfront Private Pool
38. Junior Bungalow Suites Waterfront & 2 & 3 Bedroom Beachfront Villas Private Pool
39. Palazzo Libro D' Oro Beachfront
40. Dream Villa Beachfront Private Pool & Royal Pavilion with 2 Private Pools
41. Palazzo Imperiale On Private Peninsula
42. 2 Bedroom Villa Waterfront Private Pool & Two Villa Residence with Private Beach
43. Medusa Estate
44. Grecotel Eva Palace

ACCOMMODATION CHART

ROOM TYPES	LOCATION	SIZE	SLEEPS	VIEW
IMPERIAL BUILDING				
Deluxe Guestroom Sea View	Main building	32m ²	3	Sea View
Panoramic Guestroom Sea View	Main building	32m ²	2	Panoramic Sea View
Cruise Guestroom Sea View	Main building	32m ²	2	Lofty Sea View
NEW Deluxe Family Suite Sea View	Penthouse, Main building	64m ²	2+2	Panoramic Sea View
NEW Deluxe Suite Sea View	Penthouse, Main building	64m ²	2+2	Panoramic Sea View
Imperial Suite Sea View	Main building	96m ²	3	Panoramic Sea View
Imperial 2-Bedroom Suite Sea View	Main building	128m ²	4+2	Panoramic Sea View
Presidential Suite	Penthouse, Main building	192m ²	4	Panoramic Sea View
GARDENS COLLECTION				
Deluxe Bungalow Sea View 1st floor	Garden area	31m ²	3	Sea View
Swim Up Junior Bungalow Suite	Garden area	33m ²	3	Sea View
Family Bungalow Open Plan Sharing Pool Ground Floor	Garden area	33m ²	2+2	Garden
Family Bungalow Open Plan Sharing Pool 1st Floor	Garden area	33m ²	2+1 or 3	Garden
Swim Up Family Bungalow Open Plan	Garden area	33m ²	2+2	Sea Side/Garden View
Boschetto Junior Family Suite	Garden area	40m ²	2+2	Garden
Boschetto Family Suite	Garden area	50m ²	4	Garden
Boschetto 2-Bedroom Apartment	Garden area	60m ²	4	Garden
WATERFRONT COLLECTION				
Panoramic Bungalow Sea View 1st floor	Waterfront	31m ²	2	Direct Sea View
Junior Suite Waterfront	Waterfront	33m ²	2	Direct Sea View
Junior Bungalow Suite Waterfront	Waterfront	42m ²	3	Direct Sea View
Maisonette on the Rocs Waterfront	Waterfront	83m ²	2+2	Direct Sea View
Maisonette on the Rocs Private Pool Waterfront	Waterfront	83m ²	2+2	Direct Sea View
2-Bedroom Roc Villa Private Pool Waterfront Sea Deck	Waterfront	80m ²	4	Direct Sea View
2-Bedroom Beachfront Villa Private Pool	Waterfront	134m ²	4	Direct Sea View
3-Bedroom Beachfront Villa Private Pool	Waterfront	176m ²	6	Direct Sea View
2-Bedroom Villa Waterfront Private Pool	Waterfront	120m ²	4+2	Direct Sea View
2-Bedroom Villa Waterfront Private Pool and Private Beach	Waterfront	120m ²	4	Direct Sea View
3-Bedroom Villa Waterfront Private Pool	Waterfront	160m ²	6	Direct Sea View
Two Villa Residence with Private Beach, 4 Bedroom	Waterfront	240m ²	8	Direct Sea View
Palazzo di Lago Private Pool on the Rocs	Waterfront	118m ²	4	Direct Sea View
Palazzo Sissy Private Pool on the Rocs	Waterfront	125m ²	4	Direct Sea View
Palazzo Odysssia Private Pool on the Rocs, 4 Bedroom	Waterfront	195m ²	6	Direct Sea View
Dream Villa Beachfront Private Pool, 3 Bedroom	Waterfront	198m ²	6	Direct Sea View
Dream Villa Beachfront Private Pool, 2 Bedroom + 1 Master	Waterfront	260m ²	6	Direct Sea View
Royal Pavilion Private Pools, 6 Bedroom	Waterfront	458m ²	12	Direct Sea View
Palazzo Libro D'Oro Beachfront Private Pool	Waterfront	320m ²	8	Direct Sea View
Palazzo Imperiale On Private Peninsula, 4 Bedroom	Waterfront	245m ²	8	Direct Sea View
AT THE TOP OF THE HILL				
NEW Medusa Estate	At the Top of the Hill	411m ²	12	Panoramic View

All room types include:

- Minibar with International Brands (extra charge)
- Complimentary Tea and Coffee Facilities
- Nespresso Machine with 2 complimentary pods per adult/per day
- In-room Safe
- Room Service from 07.00 until 23:00 (extra charge)
- Laundry Services (extra charge)
- Pillow Menu
- Bathrobes & Slippers
- Hair Dryer
- Deluxe Bathroom Amenities
- Complimentary Wi-Fi
- LCD TV
- Resort beach bag with towels & beach accessories

Additionally in all villas:

- complementary Full Set Bar

ACCOMMODATION LAYOUTS & PHOTOS ARE SAMPLES AND MAY VARY DEPENDING ON THE POSITION WITHIN THE HOTEL. MEASUREMENTS ARE APPROXIMATE TO THE NEAREST m²

View more details & photos about facilities, services & room details online at corfuimperial.com

IMPERIAL BUILDING



DELUXE GUESTROOM SEA VIEW

Location: Imperial Building, 2nd, 3rd or 4th floor

View: Sea View

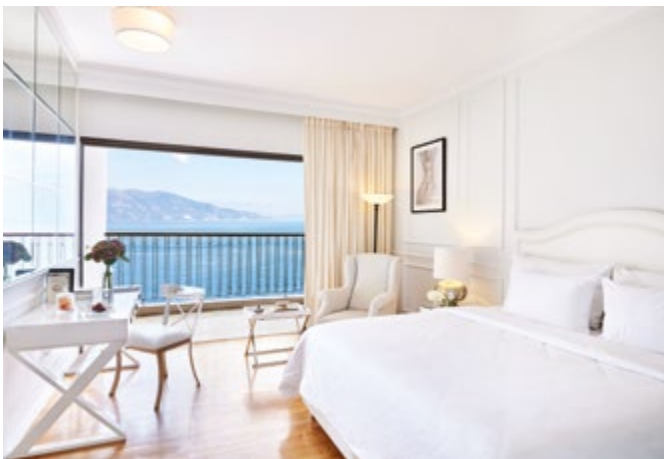
Size: Indoor: 32 sq.m., balcony: 6 sq.m.

Layout: Open plan

Sleeps: 3 adults

Beds: Double bed or Twins & optionally extra single bed

Bath: Marble bathroom with one washbasin & walk-in shower



PANORAMIC GUESTROOM SEA VIEW

Location: Imperial Building, 3rd or 4th floor

View: Panoramic Sea View

Size: Indoor: 32 sq.m., balcony: 6 sq.m.

Layout: Open plan

Sleeps: 2 adults

Beds: King size bed

Bath: Marble bathroom with one washbasin & walk-in shower

Specials: Parquet floors. Floor-to-ceiling glass doors.



CRUISE GUESTROOM SEA VIEW

Location: Imperial Building, 4th floor

View: Lofty Sea View

Size: Indoor: 32 sq.m., balcony: 6 sq.m.

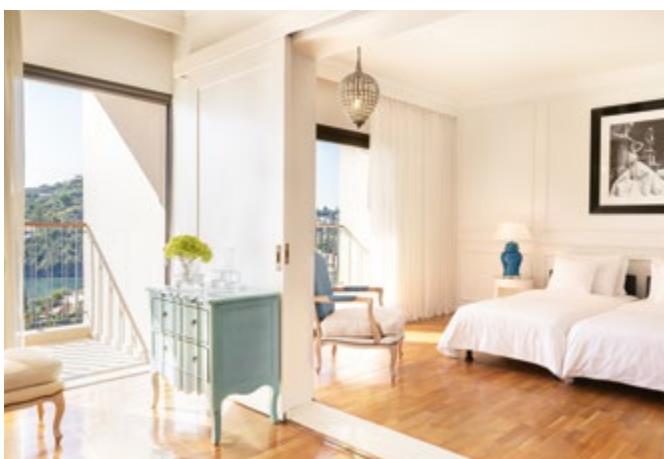
Layout: Open plan

Sleeps: 2 adults

Beds: King size bed

Bath: Marble bathroom with one washbasin & walk-in shower

Specials: Parquet floors. Floor-to-ceiling glass doors.



NEW DELUXE FAMILY SUITE SEA VIEW

Location: Penthouse, Imperial building, 5th floor

View: Panoramic Sea View

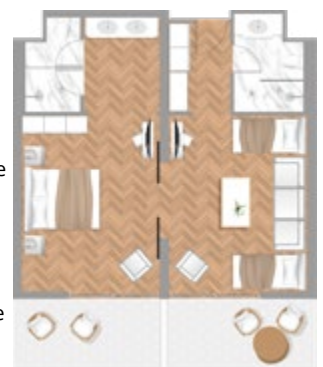
Size: Indoor: 64 sq.m., balcony: 12 sq.m.

Layout: Master bedroom & separate living area

Sleeps: 2 adults + 2 children

Beds: King size bed & optionally 2 extra single beds

Bath: Two spacious bathrooms. One with 2 washbasins & 1 shower and one with 1 washbasin & 1 shower.



IMPERIAL BUILDING



NEW DELUXE SUITE SEA VIEW

Location: Penthouse, Imperial building, 5th floor
View: Panoramic Sea View
Size: Indoor: 64 sq.m., balcony: 12 sq.m.
Layout: Master bedroom & separate living area
Sleeps: 2 adults + 2 children
Beds: King size bed & optionally 2 extra single beds
Bath: One spacious bathroom, 2 washbasins, 1 shower
Special: Spacious walk-in wardrobe



IMPERIAL SUITE SEA VIEW

Location: Imperial Building, 2nd, 3rd or 4th floor
View: Panoramic Sea View, Corfu town & the Marina
Size: Indoor: 96 sq.m., balcony: 15 sq.m. **Layout:** Separate Master Bedroom & spacious dining & living room area **Sleeps:** 3 adults
Beds: Double bed & optionally 1 extra single bed
Bath: Marble bathroom with one washbasin & bathtub
Specials: Exclusive hand carved furniture. Refreshment centre. Views over gardens, pool and sea.



IMPERIAL 2-BEDROOM SUITE SEA VIEW

Location: Imperial Building, 2nd, 3rd or 4th floor **View:** Panoramic Sea View, Corfu town & the Marina **Size:** Indoor: 128 sq.m., balcony: 21 sq.m.
Layout: 2 separate Master bedroom suites, spacious dining and living room
Sleeps: 4 adults + 2 children
Beds: 2 Double beds & optionally 2 extra single beds **Bath:** 2 marble bathrooms, 1 bathtub in the suite and 1 walk-in shower in the additional room **Specials:** Privileged location with magnificent views. Ample wardrobes.

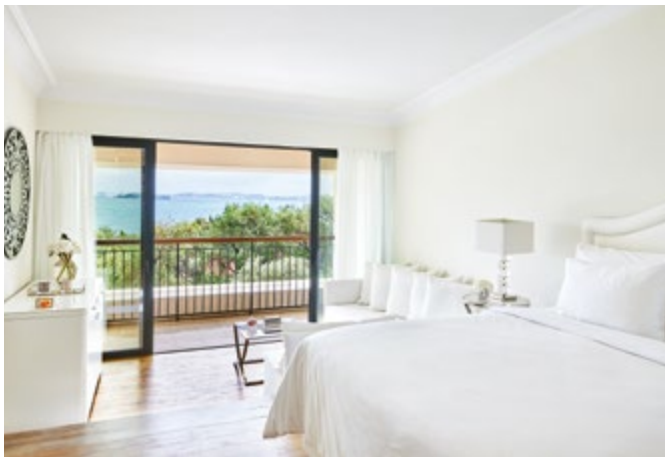


PRESIDENTIAL SUITE

Location: Penthouse Imperial Building
View: Panoramic Sea View
Size: Indoor: 192 sq.m., balcony: 20 sq.m.
Layout: 2 bedrooms, 1 living room, 1 separate dining room and study, dressing room & refreshment centre
Sleeps: 4 adults
Beds: 2 Double beds
Bath: Two marble bathrooms with hydromassage bathtub and sea views
Specials: 4 Balconies with furnished sitting area offer 180° sea views down to Corfu Town and the Ionian Sea



GARDENS COLLECTION



DELUXE BUNGALOW SEA VIEW 1ST FLOOR

Location: Garden Area, 1st floor

View: Sea View

Size: Indoor: 31 sq.m., balcony: 6 sq.m.

Layout: Open plan

Sleeps: 3 adults

Beds: Double bed or Twins & sofa bed

Bath: One washbasin, bathtub or shower



SWIM UP JUNIOR BUNGALOW SUITE

Location: Garden Area, Ground Level **View:** Sea View

Size: Indoor: 33 sq.m., veranda: 6 sq.m. with pool bed

Layout: Open plan

Sleeps: 3 adults

Beds: Double bed or Twins & sofa bed

Bath: One washbasin, bathtub and shower

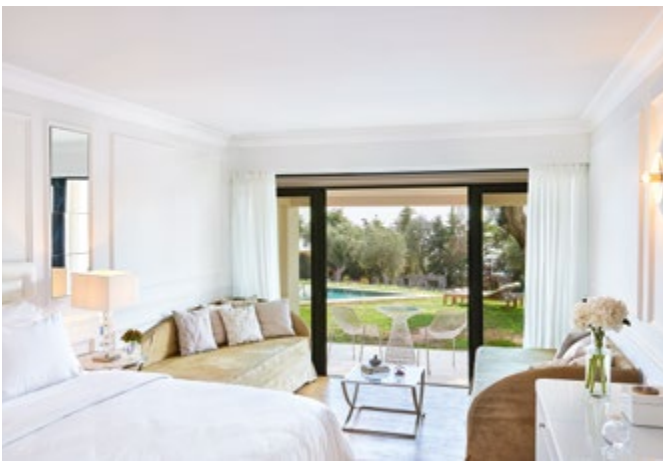
Pool: Sharing pool





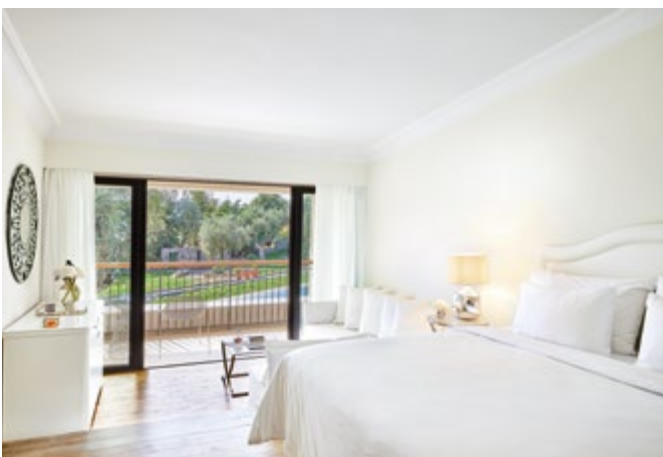
SWIM UP FAMILY BUNGALOW OPEN PLAN

Location: Garden Area, Ground Level
View: Garden View
Size: Indoor: 33 sq.m., veranda: 6 sq.m. with pool bed
Layout: Open plan
Sleeps: 2 adults + 2 children
Beds: Double bed or Twins & two sofa beds
Bath: One washbasin, bathtub or shower
Pool: Sharing pool



FAMILY BUNGALOW OPEN PLAN SHARING POOL GROUND FLOOR

Location: Garden Area, Ground Level
View: Garden View
Size: Indoor: 33 sq.m., outdoor: 6 sq.m.
Layout: Open plan
Sleeps: 2 adults + 2 children
Beds: Double bed or Twins & two sofa beds
Bath: One washbasin, bathtub & shower
Pool: Sharing Pool



FAMILY BUNGALOW OPEN PLAN SHARING POOL 1ST FLOOR

Location: Garden Area, 1st floor
View: Garden View
Size: Indoor: 33 sq.m., outdoor: 6 sq.m.
Layout: Open plan,
Sleeps: 3 adults
Beds: Double bed or Twins & sofa bed
Bath: One washbasin, bathtub
Pool: Sharing Pool



BOSCHETTO FAMILY ACOMMODATION

A new accommodation collection at the Kommeno Peninsula, designed exclusively for families. A family oasis in a short distance of approximately 200m from the main building, nestled amongst silver-green olive groves and Corfu Imperial's colourful gardens.



BOSCHETTO JUNIOR FAMILY SUITE

Location: Boschetto Gardens & pool Ground, 1st or 2nd floor

View: Garden View

Size: Indoor: 40 sq.m., outdoor: 6 sq.m.

Layout: Open plan or 2 separate bedrooms

Sleeps: 2 adults + 2 children

Beds: Double bed & two single beds

Bath: One washbasin, shower

Floor: Tiles or wood



BOSCHETTO FAMILY SUITE

Location: Boschetto Gardens & pool, Ground or 1st or 2nd floor

View: Garden View

Size: Indoor: 50 sq.m., outdoor: 6 sq.m.

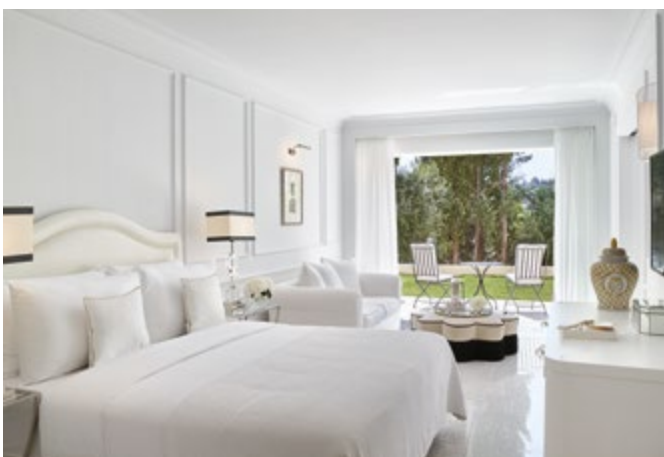
Layout: 2 separate bedrooms

Sleeps: 4 adults

Bed: Double bed & two single beds

Bath: One washbasin, shower

Floor: Tiles or wood



BOSCHETTO TWO-BEDROOM APARTMENT

Location: Boschetto & pool, Ground or 1st or 2nd floor

View: Garden View

Size: Indoor: 60 sq.m., outdoor: 6 sq.m.

Layout: 2 separate bedrooms

Sleeps: 4 adults

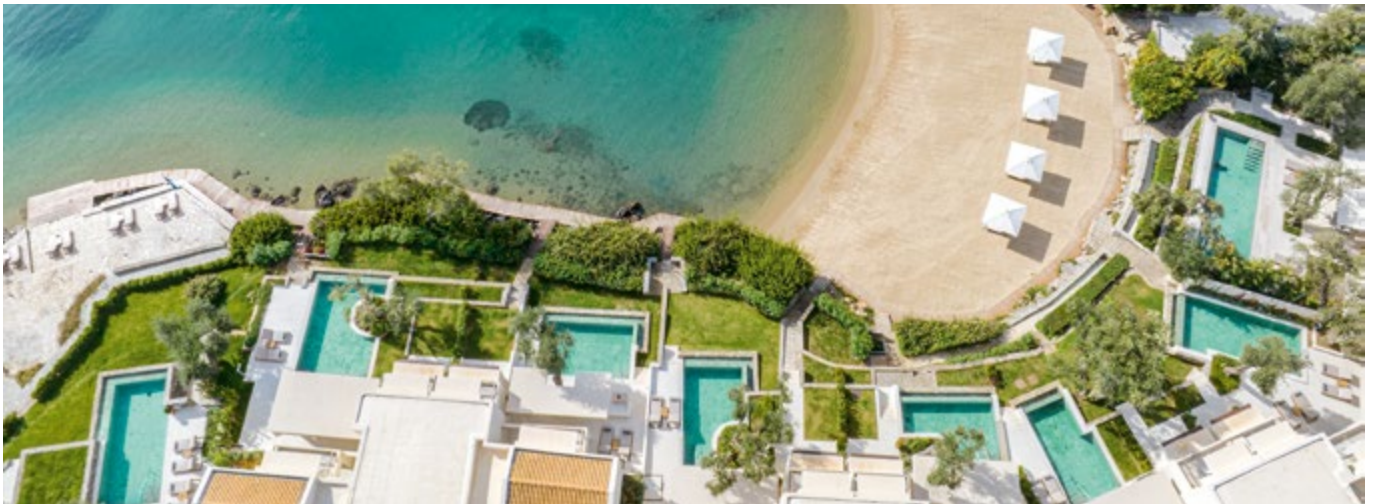
Beds: Double bed & two single beds

Bath: 2 bathrooms, 2 washbasins, 2 showers

Floor: Tiles or wood



WATERFRONT COLLECTION



PANORAMIC BUNGALOW SEA VIEW 1ST FLOOR

Location: Waterfront, 1st floor
View: Sea View
Size: Indoor: 31 sq.m., outdoor: 6 sq.m.
Layout: Open plan
Sleeps: 2 adults
Beds: Double bed & 1 sofa bed
Bath: One washbasin, bathtub



JUNIOR SUITE WATERFRONT

Location: Waterfront, Ground floor
View: Sea View
Size: Indoor: 33 sq.m., outdoor: 6 sq.m.
Layout: Open plan
Sleeps: 2 adults
Beds: Double bed & 1 sofa bed
Bath: One washbasin, bathtub & shower



JUNIOR BUNGALOW SUITE WATERFRONT

Location: Waterfront, Ground Floor with terrace
View: Direct Sea View
Size: Indoor: 42 sq.m., outdoor terrace: 10 sq.m.
Layout: Open plan
Sleeps: 3 adults
Beds: 1 King size bed & 1 Sofa Bed
Bath: One washbasin, bathtub & spacious open wardrobe space



MAISONETTE ON THE ROCS WATERFRONT

Location: Waterfront

View: Direct Sea View

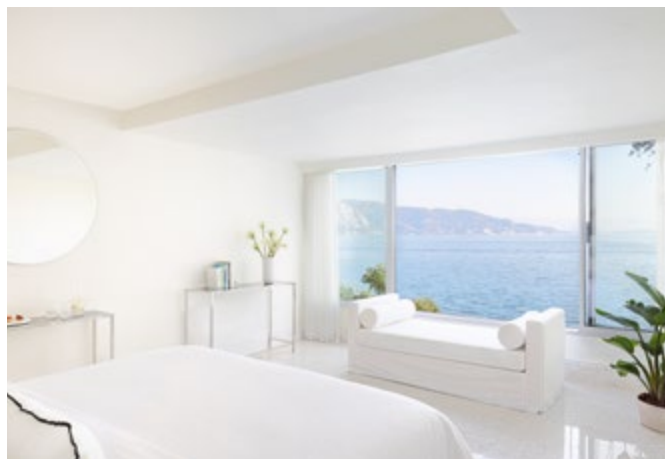
Size: Indoor: 83 sq.m., outdoor: 23 sq.m.

Layout: Two levels

Sleeps: 2 adults and 2 children

Beds: Double bed & 2 twin beds

Bath: 2 bathrooms, 2 washbasins, 2 showers



MAISONETTE ON THE ROCS PRIVATE POOL WATERFRONT

Location: Waterfront

View: Direct Sea View

Size: Indoor: 83 sq.m., outdoor: 23 sq.m.

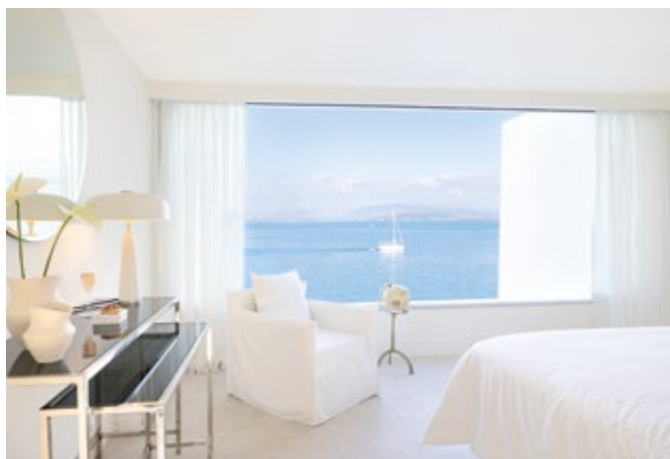
Layout: Two levels

Sleeps: 2 adults and 2 children

Beds: Double bed & 2 twin beds

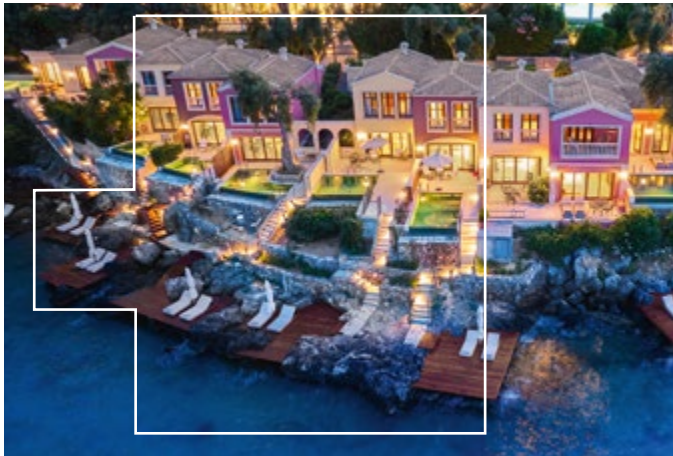
Bath: 2 bathrooms, 2 washbasins, 2 showers

Pool: Private pool



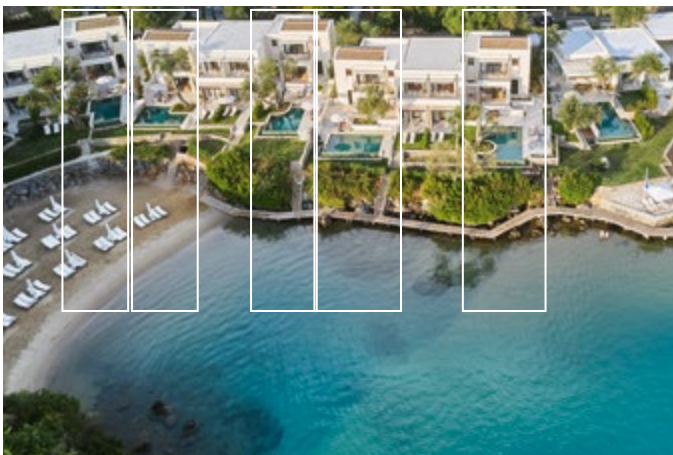
2-BEDROOM ROC VILLA PRIVATE POOL WATERFRONT SEA DECK

- Location:** Waterfront
- View:** Direct Sea View
- Size:** Indoor: 80 sq.m., outdoor: 50-70 sq.m.
- Layout:** Two levels, 2 bedrooms & Dress Room
- Sleeps:** 4 adults
- Beds:** 2 Double beds
- Bath:** Two marble bathrooms with 3 wash basins, 1 bathtub, 1 shower
- Pool:** Private swimming pool up to 37m²
- Specials:** Private Sea Deck



2-BEDROOM BEACHFRONT VILLA PRIVATE POOL

- Location:** Waterfront
- View:** Direct Sea View
- Size:** Indoor: 134 sq.m., outdoor: balcony: 12 sq.m./terrace: 15 sq.m.
- Layout:** Two levels, 2 Master bedrooms with connecting door (upper level) & separate living-dining room (ground level)
- Sleeps:** 4 adults
- Beds:** 2 Double beds
- Bath:** 3 Bathrooms, 4 washbasins, 2 walk-in showers
- Pool:** Private swimming pool (access from living room)
- Specials:** On the waterfront with direct views to the sea. Access to the beach and garden area.



WATERFRONT COLLECTION



3-BEDROOM BEACHFRONT VILLA PRIVATE POOL

Location: Waterfront **View:** Sea View

Size: Indoor: 176 sq.m., outdoor: balcony: 12 sq.m./terrace: 15 sq.m.

Layout: Two levels, 2 Master bedrooms with connecting door on the first floor with balconies and sea view, 1 ground level bedroom suite with terrace and sea view, 1 living room with a dining area and a desk.

Sleeps: 6 adults **Beds:** 3 Double beds

Bath: 4 bathrooms, 5 wash basins, 2 walk-in showers, 1 shower, 1 bathtub

Pool: Private swimming pool (access from living room)

Special: Direct access to the beach and garden area



First floor



Ground floor

2- BEDROOM VILLA WATERFRONT PRIVATE POOL & PRIVATE BEACH

Location: Waterfront with direct access to the sea.

View: Direct Sea View, Corfu town & the Marina.

Size: Indoor: 120 sq.m., outdoor: 70-210 sq.m.

Layout: Ground Floor 2 Master bedrooms & separate living area

Sleeps: 4 adults

Beds: 2 Double beds

Bath: Two large marble bathrooms: One bathroom with double washbasin, separate shower, separate bathtub and one bathroom with walk-in shower

Pool: Private swimming pool up to 37m2, heated up to 25°C upon request with extra charge (90€ per day).



Type 1

Type 2



3-BEDROOM VILLA WATERFRONT PRIVATE POOL

Location: Waterfront with direct access to the sea.

View: Direct Sea View, Corfu town & the Marina.

Size: Indoor: 160 sq.m., outdoor: 120 sq.m.

Layout: Ground Floor 3 Master bedrooms & separate living area

Sleeps: 6 adults

Beds: 3 Double beds

Bath: Three large marble bathrooms: Two bathrooms with double washbasin, separate showers, separate bathtubs and a bathroom with a marble walk-in shower

Pool: Private swimming pool up to 37m2, heated up to 25°C upon request with extra charge (90€ per day).



WATERFRONT COLLECTION



TWO VILLA RESIDENCE WITH PRIVATE BEACH, 4 BEDROOM

Location: Waterfront with direct access to the sea.

View: Direct Sea View, Corfu town & the Marina.

Size: Indoor: 240 sq.m., outdoor: 70-210 sq.m.

Layout: Two separate villas, One Level.

4 Master bedrooms & separate living areas

Sleeps: 8 adults

Beds: 4 Double beds

Bath: Four large marble bathrooms: 2 bathrooms with double washbasin, separate shower, separate bathtub and two bathrooms with walk-in shower.

Pool: 2 Private swimming pools

Specials: Private beach with sunbeds and umbrellas



WATERFRONT COLLECTION

PALAZZO DI LAGO PRIVATE POOL ON THE ROCS

Location: Waterfront

View: Direct Sea View

Size: Indoor: 118 sq.m., outdoor: 90 sq.m.

Layout: Two levels, 2 bedrooms (1 master bedroom with private terrace) & separate living & dining area, fully equipped kitchen

Sleeps: 4 adults

Beds: 2 Double beds

Bath: 2 bathrooms with walk-in showers, WC

Pool: Private swimming pool, heated up to 25°C upon request with extra charge (90€ per day).

Specials: Outdoor furnished terrace. Private sea deck with sun beds and umbrellas.



PALAZZO SISSY PRIVATE POOL ON THE ROCS

Location: Waterfront

View: Direct Sea View

Size: Indoor: 125 sq.m., outdoor: 50 sq.m.

Layout: Two levels, 2 bedrooms (1 master bedroom with private terrace) & separate living & dining area, fully equipped kitchen

Sleeps: 4

Beds: 1 Double bed & 2 twin beds

Bath: 3 bathrooms 1 with Hydromassage bathtub, 1 with shower, 1 WC

Pool: Private swimming pool up to 20m2

Specials: Outdoor furnished terrace. Private sea deck with sun beds and umbrellas. Large shaded balcony (upper level).



WATERFRONT COLLECTION



PALAZZO ODYSSEA PRIVATE POOL ON THE ROCS, 4 BEDROOM

Location: Waterfront

View: Direct Sea View

Size: Palazzo Odyssea: indoor: 195 sq.m., outdoor: 57 sq.m.

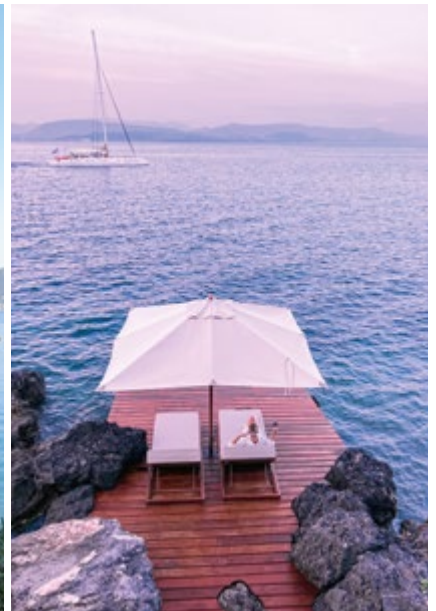
Layout: Two levels, 4 bedrooms & separate living & dining areas, fully equipped kitchen **Sleeps:** 8

Beds: 3 Double bed & 2 twin beds

Bath: 4 marble bathrooms: 2 with walk-in showers, 1 with shower cubin and 1 bathtub hydrotherapy

Pool: Private swimming pool

Specials: Outdoor furnished terrace. Private sea deck with sun beds and umbrellas. Large shaded balcony (upper level).



WATERFRONT COLLECTION



DREAM VILLA BEACHFRONT PRIVATE POOL, 3 BEDROOM

Location: Beachfront with direct access to the beach

View: Direct Sea View, **Size:** Indoor: 198 sq.m., outdoor: 211 sq.m.

Layout: Two levels, 3 bedrooms & separate living and dining area

Sleeps: 6 adults

Beds: 1 King size Bed and 2 Double beds (twin beds upon request)

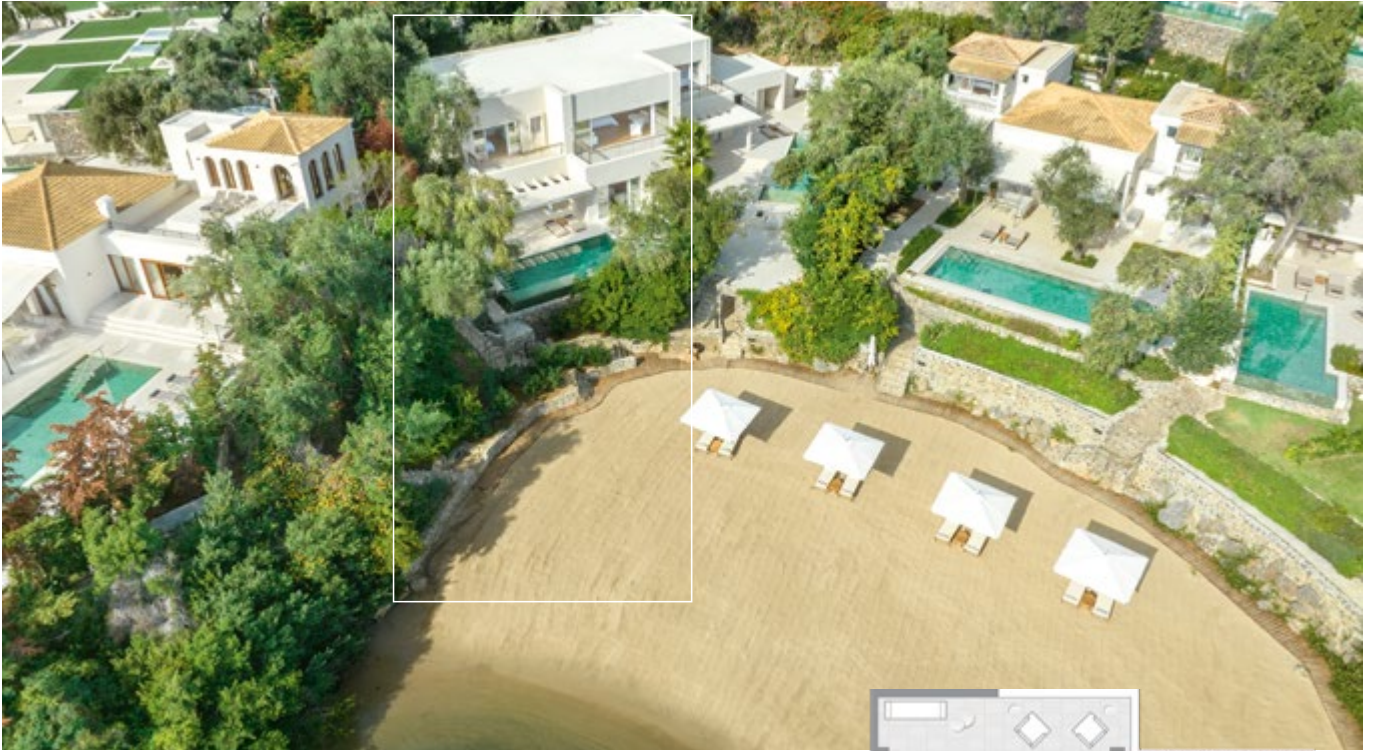
Bath: One marble bathroom with washbasin, bathtub & shower, Two marble bathrooms with washbasin & shower and 1 WC

Pool: Private swimming pool 50m², heated up to 25°C upon request with extra charge (90€ per day).

Specials: Shaded terrace with wooden sun beds. Romantic lounge and dining area. Private garden & private steps to the beach.

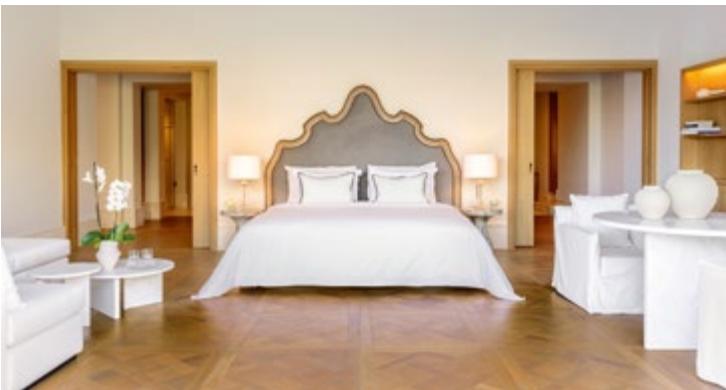


WATERFRONT COLLECTION



DREAM VILLA BEACHFRONT PRIVATE POOL, 2 BEDROOM + 1 MASTER

Location: Beachfront with direct access to famous class beach
View: Direct Sea View **Size:** Indoor: 260 sq.m., outdoor: 60 sq.m.
Layout: Two levels, 2 bedrooms + 1 master & separate living and dining area
Sleeps: 6 adults
Beds: 1 King size Bed and 2 Double beds (twin beds upon request)
Bath: One marble bathroom with double washbasin, bathtub & shower, Two marble bathrooms with washbasin & shower and 1 WC
Pool: Private swimming pool 45m², heated up to 25°C upon request with extra charge (90€ per day).
Specials: Shaded terrace with wooden sun beds. Romantic lounge and dining area. Private garden & private steps to the beach.



WATERFRONT COLLECTION



ROYAL PAVILION PRIVATE POOLS, 6 BEDROOMS

Location: Beachfront with direct access to the beach

View: Direct Sea View

Size: Indoor: 458 sq.m., outdoor: 271 sq.m.

Layout: Two levels/4 bedrooms & 2 living rooms

Sleeps: 12 adults

Beds: 2 King size Bed and 4 Double beds (twin beds upon request)

Bath: 6 En suite marble bathrooms. Two marble bathrooms with washbasin, bathtub & shower, 4 marble bathrooms with washbasin & shower.

Pools: 2 Private swimming pools 50 & 45m², heated up to 25°C upon request with extra charge (90€ per day).

Specials: Shaded terraces with lounge and dining areas, sun beds and umbrellas, private gardens & private steps to the beach.



First floor



Ground floor

WATERFRONT COLLECTION



PALAZZO LIBRO D'ORO BEACHFRONT PRIVATE POOL

Location: Waterfront with direct access to the beach

View: Direct Sea View

Size: Indoor: 320 sq.m., outdoor: 250 sq.m.

Layout: Two levels. 4 luxurious Bedroom Suites & 1 marble high ceiling sea view living & dining area, fully equipped kitchenette, office facilities

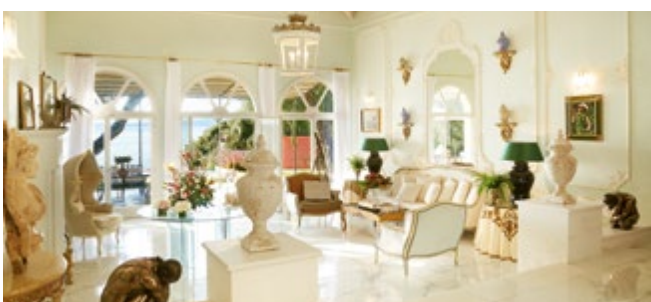
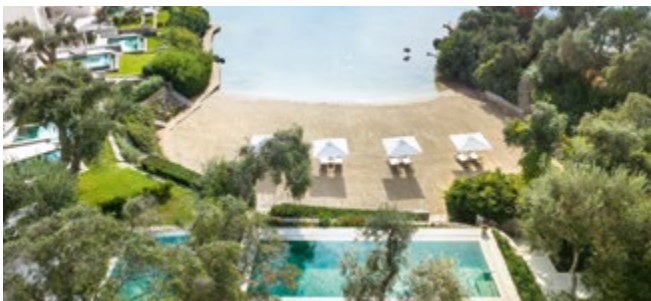
Sleeps: 8

Beds: 3 Double beds & 2 twin beds

Bath: 4 Spacious marble bathrooms each with double washbasins, bathtub, ample wardrobes

Pool: Private swimming pool 30m² with reverse swimming, heated up to 25°C upon request with extra charge (90€ per day).

Specials: Fully furnished verandas & balconies. Fully equipped extensive garden and patio areas with lounge and dining furniture & sun loungers. Direct access to a sandy cove. TV security system.



WATERFRONT COLLECTION



PALAZZO IMPERIALE ON PRIVATE PENINSULA, 4 BEDROOM

Location: Waterfront with private access to the beach.

View: Direct Sea View

Size: Indoor: 245 sq.m., outdoor: 290 sq.m.

Layout: Two Level Villa. 1 luxurious master bedroom and 2 separated bedrooms on the ground floor with a spacious high ceiling living room with dining area, fully equipped kitchenette and office facilities. 1 luxurious master bedroom on the upper floor.

Sleeps: 8, **Beds:** 3 Double beds & 2 twin beds

Bath: 4 bathrooms and 1 WC room. 1 marble bathroom with double wash basins, hydrotherapy bathtub & shower cubicle, 1 bathroom with one wash basin, bathtub & shower cubicle & 1 bathroom with one wash basin, shower cubicle, ample wardrobes. 1 bathroom with marble walk-in shower and one basin

Pool: Private swimming pool 54m2, heated up to 25°C upon request with extra charge (90€ per day).

Specials: Wooden decks to the sea, furnished garden court, outdoor stone terrace with lounging and dining furniture, shaded dining veranda, lounge & swimming deck with sun beds. 4 flat screen TVs. Nanny or staff quarters with ensuite shower and WC. Private entrance. Yachting option (collection by tender boat). TV security system.



Ground floor





NEW MEDUSA ESTATE

Location: At the top of the Hill of the Kommeno Peninsula

View: Panoramic View of the Sea and Corfu Island

Size: Indoor: 411 sq.m., outdoor: 1500 sq.m.

Layout: Two Levels. Ground Floor: 3 luxurious master bedrooms with separate bedrooms, and 1 EC. Spacious high ceiling salon with dining and living areas, fully equipped kitchen. Upper Floor: 1 luxurious master bedroom and 2 double bedrooms with separate bathrooms and a living area.

Sleeps: 12 **Beds:** 6 Double Beds

Bath: 6 bathrooms and 1 WC. 4 marble bathrooms with one wash basin each and showers. 2 marble bathrooms with two wash basins each and showers.

Pool: Private Swimming Pool 48m², heated up to 25°C upon request with extra charge (90€ per day).

Specials: A traditional Corfiot Estate, former olive oil factory with wooden floors and 360 views of the Island. Fully furnished verandas & balconies, a fireplace and an olive mill. Fully equipped extensive garden and patio areas with lounge and dining furniture & sun loungers.

